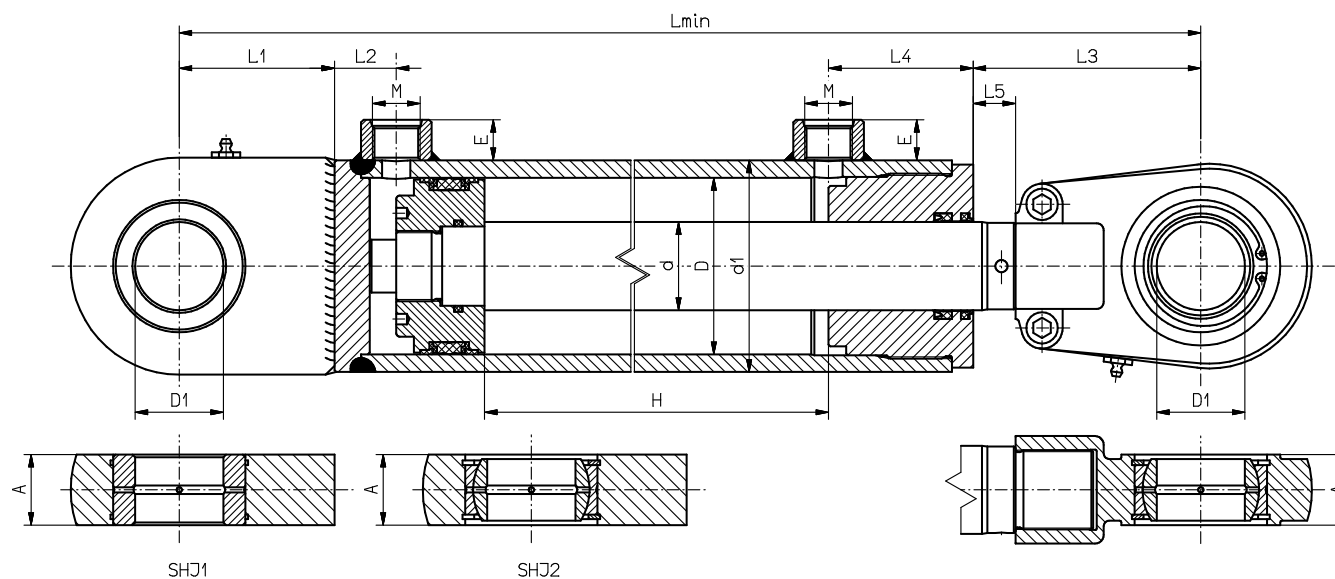


Hydraulic cylinder with single-end piston rod mounted on a bearing sleeve/plain bearings **SHJ1. / SHJ2.**



D	d	D	d	D1	d1	Lmin	L1	L2	L3	L4	L5	A	M'	E'	M''	E''
40	22	40	22	20	50	H + 223	38	30	70	40	20	19	M16x1,5	18	G1/4"	16
50	28	50	28	25	65	H + 238	45	33	70	45	20	23	M16x1,5	18	G3/8"	17
63	36	63	36	30	75	H + 264	51	36	80	52	20	28	M22x1,5	18	G1/2"	18
80	40	80	40	35	95	H + 301	61	37	90	63	20	30	M22x1,5	18	G1/2"	18
	45		45	35	95	H + 301	61	37	90	63	20	30	M22x1,5	18	G1/2"	18
100	50	100	50	50	120	H + 399	88	50	129	82	24	40	M27x2	23	G3/4"	20
	60		60	50	120	H + 399	88	50	129	82	24	40	M27x2	23	G3/4"	20
110	60	110	60	50	130	H + 399	88	50	129	82	24	40	M27x2	23	G3/4"	20
	70		70	50	130	H + 399	88	50	129	82	24	40	M27x2	23	G3/4"	20
125	70	125	70	60	145	H + 446	100	50	154	82	24	50	M27x2	23	G3/4"	20
	80		80	60	145	H + 446	100	50	154	82	24	50	M27x2	23	G3/4"	20
140	70	140	70	60	165	H + 472	100	56	154	102	24	50	M33x2	27	G1"	25
	80		80	60	165	H + 472	100	56	154	102	24	50	M33x2	27	G1"	25
160	80	160	80	80	185	H + 558	141	61	194	102	24	60	M33x2	27	G1"	25
	90		90	80	185	H + 558	141	61	194	102	24	60	M33x2	27	G1"	25

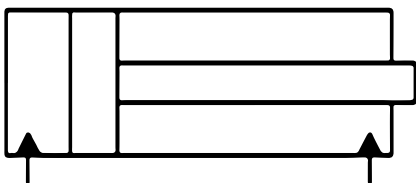
CYLINDER DESCRIPTION:

In the cylinders of this type, working motion in both directions (extension and return) is undertaken as a result of the working medium (e.g. hydraulic oil under pressure) alternately on both surfaces of the piston.

SHJ1 – The cylinders are mounted to the object/device using fixed rod eye on the base of the cylinder with an embedded cylinder sleeve (swinging mounting). Such solution require precise guidance of the piston rod end in the kinetic system of the object (machine, device), excluding lateral forces in the plane perpendicular to the plane of the piston swing movement.

SHJ2 - The cylinders are mounted to the object/device using a fixed rod eye on the base of the cylinder with an embedded GE slide plain bearing. This solution allows for some slight lateral angular deviations of the cylinder during operation. The permissible deviations are provided in the catalogue sheets of bearings.

Hydraulic diagram:



An example of symbols on the Hydraulic cylinder with single-end piston rod with articulated mounting (slide plain bearing in the base of the cylinder), construction type C, with a nominal pressure 16 MPa, with a piston rod diameter 100 mm, piston rod diameter 50 mm, piston stroke 630 mm, with an extended piston rod by 70 mm, breaking screws of piston from the cylinder base, not regulated from the side of the cylinder head, piston rod ended with screwed-on or screwed-in eye.

SHJ2 - 16 - 100/50 - 630/70 - u

Explanation of symbols:

Operating medium	hydraulic oils with a viscosity of 10 - 450 mm² / s
Nominal Pressure	20 MPa
Oil purity class	20/18/15 according to ISO 4406
Operating temperature	-30 to 80 °C
Maximum operating speed	0.5 m/s
Piston rod shell	Technical chrome 25 um +/- 5um (over 20 mm in diameter)

- Piston hydraulic cylinder with single-end piston rod
- Articulated mount
- Nominal Pressure (MPa)
- Piston diameter (mm)
- Piston rod diameter (mm)
- Piston stroke (mm)
- Piston rod extension (mm)
- End of the piston rod with screw-on or screw-in ear