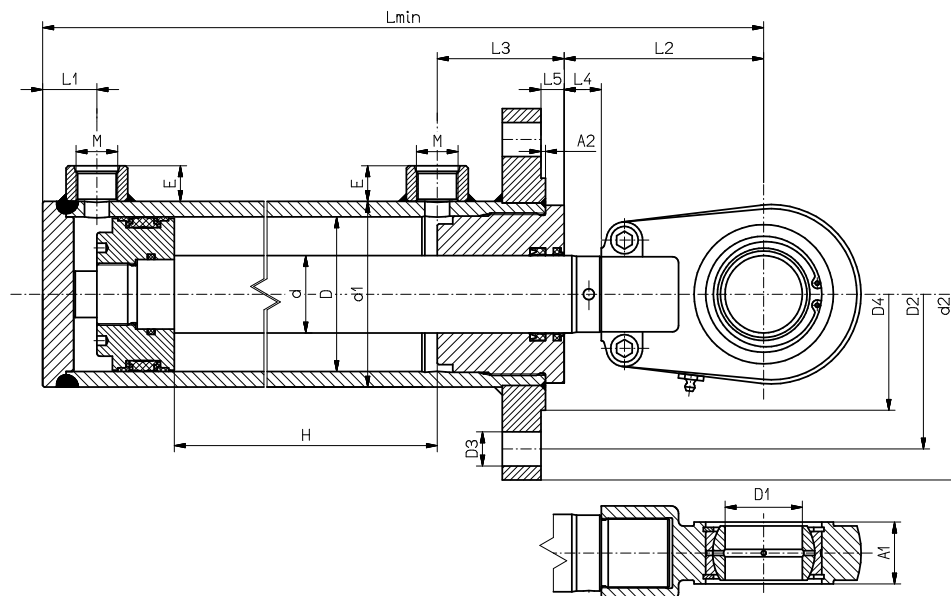


## Hydraulic cylinder with single-end piston rod mounted on the front/back flange **SHJ5P. / SHJ5T.**



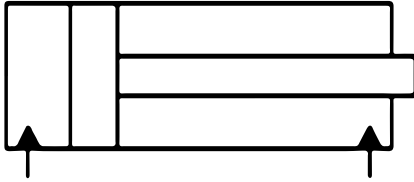
D	d	D1	d1	d2	D2	D3	D4	Lmin	L1	L2	L3	L4	L5	A1	A2	M'	E'	M''	E''
40	22	20	50	110	90	9	65	H + 185	30	70	40	20	11	19	3	M16x1,5	18	G1/4"	16
50	28	25	65	130	106	11	85	H + 193	33	70	45	20	11	23	3	M16x1,5	18	G3/8"	17
63	36	30	75	160	130	12,5	100	H + 213	36	80	52	20	13	28	3	M22x1,5	18	G1/2"	18
80	40	35	95	210	175	17	135	H + 240	37	90	63	20	14	30	3	M22x1,5	18	G1/2"	18
	45	35	95	210	175	17	135	H + 240	37	90	63	20	14	30	3	M22x1,5	18	G1/2"	18
100	50	50	120	240	200	22	150	H + 311	50	129	82	24	15	40	3	M27x2	23	G3/4"	20
	60	50	120	240	200	22	150	H + 311	50	129	82	24	15	40	3	M27x2	23	G3/4"	20
110	60	50	130	260	210	22	160	H + 311	50	129	82	24	15	40	5	M27x2	23	G3/4"	20
	70	50	130	260	210	22	160	H + 311	50	129	82	24	15	40	5	M27x2	23	G3/4"	20
125	70	60	145	280	230	22	180	H + 346	50	154	82	24	17	50	5	M27x2	23	G3/4"	20
	80	60	145	280	230	22	180	H + 346	50	154	82	24	17	50	5	M27x2	23	G3/4"	20
140	13	60	165	288	240	26	185	H + 372	56	154	102	24	17	50	5	M33x2	27	G1"	25
	80	60	165	288	240	26	185	H + 372	56	154	102	24	17	50	5	M33x2	27	G1"	25
160	80	80	185	340	280	26	240	H + 417	61	194	102	24	17	60	5	M33x2	27	G1"	25
	90	80	185	340	280	26	240	H + 417	61	194	102	24	17	60	5	M33x2	27	G1"	25

## CYLINDER DESCRIPTION:

Cylinders with the flanged mounting of the cylinder to the object. It is a rigid mounting (fixed mounting point of the cylinder to the object), so the end of the piston rod should be precisely guided in the kinematic system of the object to exclude lateral forces acting on the piston rod.

It is recommended to use articulated mounting of the piston rod end in the kinematic system of the object (sliding plain bearing).

Hydraulic diagram:



**An example of symbols on the Hydraulic cylinder** with single-end piston rod with articulated mounting (slide plain bearing in the base of the cylinder), construction type C, with a nominal pressure 16 MPa, with a piston rod diameter 100 mm, piston rod diameter 50 mm, actuator stroke 630 mm, with an extended piston rod by 70 mm, breaking screws of piston from the cylinder base, not regulated from the side of the cylinder head, piston rod ended with screwed-on or screwed-in eye

Explanation of symbols:

Operating medium	<b>hydraulic oils with a viscosity of 10 - 450 mm<sup>2</sup> / s</b>
Nominal Pressure	<b>20 MPa</b>
Oil purity class	<b>20/18/15 according to ISO 4406</b>
Operating temperature	<b>-30 to 80 °C</b>
Maximum operating speed	<b>0.5 m/s</b>
Piston rod shell	<b>Technical chrome 25 um +/- 5um (over 20 mm in diameter)</b>

**SHJ2 - 16 - 100/50 - 630/70 - u**

- Piston hydraulic cylinder with single-end piston rod
- Articulated mount
- Nominal Pressure (MPa)
- Piston diameter (mm)
- Piston rod diameter (mm)
- Piston stroke (mm)
- Piston rod extension (mm)
- End of the piston rod with screw-on or screw-in ear