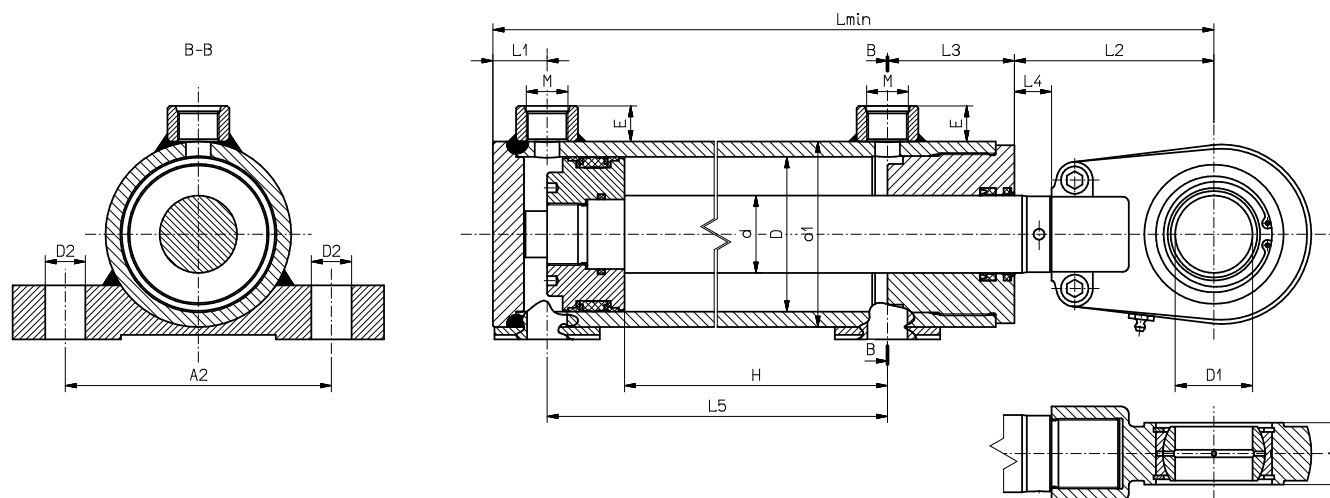


## Hydraulic cylinder with single-end piston rod mounted on lugs **SHJ6**.



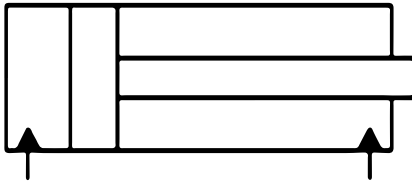
D	d	D1	D2	d2	Lmin	L1	L2	L3	L4	L5	A1	A2	M'	E'	M''	E''
40	22	25	11	50	H + 185	30	70	40	20	H + 45	19	83	M16x1,5	18	G1/4"	16
50	28	30	14	65	H + 193	33	70	45	20	H + 45	23	102	M16x1,5	18	G3/8"	17
63	36	35	20	75	H + 213	36	80	52	20	H + 45	28	124	M22x1,5	18	G1/2"	18
80	40	40	20	95	H + 240	37	90	63	20	H + 50	30	149	M22x1,5	18	G1/2"	18
	45	40	20	95	H + 240	37	90	63	20	H + 50	30	149	M22x1,5	18	G1/2"	18
100	50	50	26	120	H + 311	50	129	82	24	H + 50	40	172	M27x2	23	G3/4"	20
	60	50	26	120	H + 311	50	129	82	24	H + 50	40	172	M27x2	23	G3/4"	20
110	60	55	26	130	H + 311	50	129	82	24	H + 50	40	185	M27x2	23	G3/4"	20
	70	55	26	130	H + 311	50	129	82	24	H + 50	40	185	M27x2	23	G3/4"	20
125	70	60	26	145	H + 346	50	154	82	24	H + 60	50	205	M27x2	23	G3/4"	20
	80	60	26	145	H + 346	50	154	82	24	H + 60	50	205	M27x2	23	G3/4"	20
140	70	60	30	165	H + 372	56	154	102	24	H + 60	50	220	M33x2	27	G1"	25
	80	60	30	165	H + 372	56	154	102	24	H + 60	50	220	M33x2	27	G1"	25
160	80	80	30	185	H + 417	61	194	102	24	H + 60	60	255	M33x2	27	G1"	25
	90	80	30	185	H + 417	61	194	102	24	H + 60	60	255	M33x2	27	G1"	25

## CYLINDER DESCRIPTION:

Cylinders mounted to the object using the lugs that are permanently connected with the cylinder body.

The performance and requirements of these cylinders are similar to those of SHJ5 cylinders.

Hydraulic diagram:



**An example of symbols on the Hydraulic cylinder** with single-end piston rod with articulated mounting (slide plain bearing in the base of the cylinder), construction type C, with a nominal pressure 16 MPa, with a piston rod diameter 100 mm, piston rod diameter 50 mm, actuator stroke 630 mm, with an extended piston rod by 70 mm, breaking screws of piston from the cylinder base, not regulated from the side of the cylinder head, piston rod ended with screwed-on or screwed-in eye.

Explanation of symbols:

Operating medium	<b>hydraulic oils with a viscosity of 10 - 450 mm<sup>2</sup> / s</b>
Nominal Pressure	<b>20 MPa</b>
Oil purity class	<b>20/18/15 according to ISO 4406</b>
Operating temperature	<b>-30 to 80 °C</b>
Maximum operating speed	<b>0.5 m/s</b>
Piston rod shell	<b>Technical chrome 25 um +/- 5um (over 20 mm in diameter)</b>

**SHJ2 - 16 - 100/50 - 630/70 - u**

- Piston hydraulic cylinder with single-end piston rod
- Articulated mount
- Nominal Pressure (MPa)
- Piston diameter (mm)
- Piston rod diameter (mm)
- Piston stroke (mm)
- Piston rod extension (mm)
- End of the piston rod with screw-on or screw-in ear